

# PHUP Series Universal Joint Bases



## Brief Introduction:

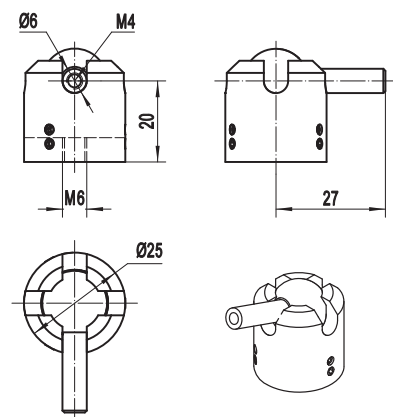
The PHUP series universal joint base features a ball and socket mounting platform, allowing for lockable angular positioning in any direction. It comes with a mounting plate and mounting holes, making it easy to connect with the post, post holder, and stage.

## Selection Table:

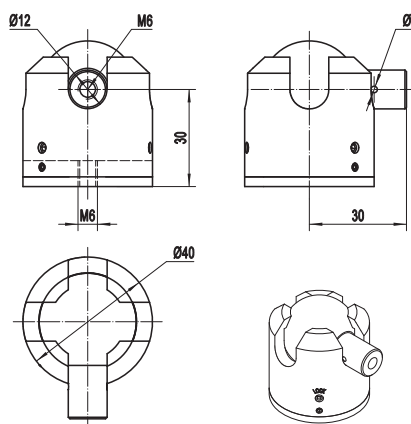
Model	PHUP	PHUP-30	PHUP-60
Post Diameter/Thread(mm)	Ø6/M4	Ø12/M6	Ø12/M6(with adaptor plate)
Pitch/yaw Tuning Range(°)	±90	±90	±90
Rotation Range(°)	-	-	360
Load Capacity(kg)	1	5	20
Max Torque(N·m)	0.5	2.5	10
Mounting Hole(mm)	M6 Thread hole	M6 Thread hole	4-Ø6.5 through holes, counterbore Ø11

## Dimensions:

### PHUP



### PHUP-30



### PHUP-60

